

## QWT75-20

### WR-75, 20W

Features:  
\* Low VSWR

Applications:  
\* Transmitters  
\* Antennas  
\* Laboratory Test  
\* Impedance Matching

#### Electrical

Frequency: 9.84~15GHz  
Average Power: 20W  
VSWR: 1.2max.

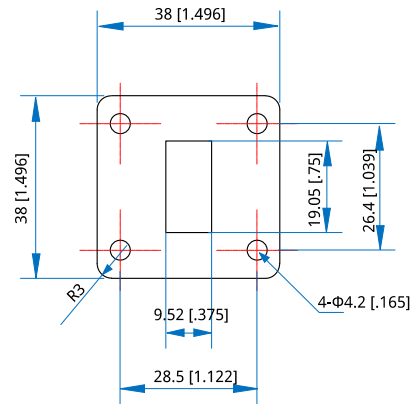
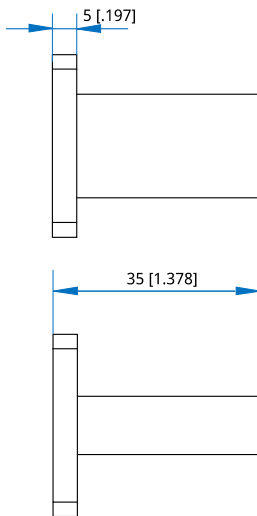
#### Mechanical

Waveguide Size: WR-75 (BJ120)  
Flange: FBP120

#### Environmental

Temperature: -55~+125°C

#### Outline Drawings



Outline A

Unit: mm [in]  
Tolerance:  $\pm 0.5$ mm [ $\pm 0.02$ in]

#### How To Order

**QWT75-20-Y-Z**

Y: Material

Z: Flange type

Material naming rules:  
A - Aluminum (Outline A)

Flange naming rules:

1 - FBP120 (Outline A)

Examples:

To order a small size waveguide termination, WR-75, 20W, Aluminum, FBP120, specify QWT75-20-A-1.

Customization is available upon request.